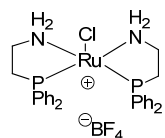
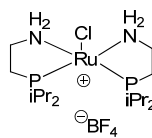


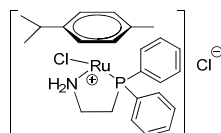
## Cationic Ruthenium Catalysts



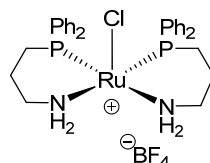
**KP44-100076**  
**[RuCl(PGly)<sub>2</sub>]BF<sub>4</sub>, ≥97%**  
**Chloro(bis(2-(diphenylphosphino)-ethanamine))ruthenium(II)tetrafluoroborate**  
 C<sub>28</sub>H<sub>32</sub>BClF<sub>4</sub>N<sub>2</sub>P<sub>2</sub>Ru; F.W: 681.84



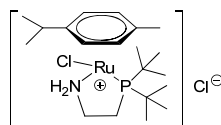
**KP44-100121**  
**[RuCl(P<sup>i</sup>Pr)<sub>2</sub>(CH<sub>2</sub>)<sub>2</sub>NH<sub>2</sub>]BF<sub>4</sub>, ≥97%**  
**Chloro(bis(2-(diisopropylphosphino)-ethanamine))ruthenium(II)**  
 C<sub>16</sub>H<sub>40</sub>BClF<sub>4</sub>N<sub>2</sub>P<sub>2</sub>Ru; F.W: 546.14



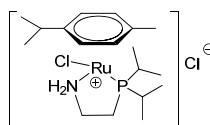
**KP44-100024**  
**[RuCl(*p*-cymene)(PGly)]Cl, ≥97%**  
**Chloro(*p*-cymene)(2-(diphenylphosphino)ethylamine)ruthenium(II)chloride**  
 C<sub>24</sub>H<sub>30</sub>Cl<sub>2</sub>NPRu; F.W: 535.45



**KP44-100136**  
**[RuCl(P<sup>i</sup>Pr)<sub>2</sub>(CH<sub>2</sub>)<sub>3</sub>NH<sub>2</sub>]BF<sub>4</sub>, ≥97%**  
**Chlorobis(3-(diphenylphosphino)propylamine)ruthenium(II)tetrafluoroborate**  
 C<sub>30</sub>H<sub>36</sub>BClF<sub>4</sub>N<sub>2</sub>P<sub>2</sub>Ru; F.W: 709.90



**KP44-100026**  
**[RuCl(*p*-cymene)(P<sup>t</sup>Bu)<sub>2</sub>(CH<sub>2</sub>)<sub>2</sub>NH<sub>2</sub>]Cl, ≥97%**  
**Chloro(*p*-cymene)(2-(di-tert-butyl phosphino)ethylamine)ruthenium(II)chloride**  
 C<sub>20</sub>H<sub>38</sub>Cl<sub>2</sub>NPRu; F.W: 495.47



**KP44-100025**  
**[RuCl(*p*-cymene)(P<sup>i</sup>Pr)<sub>2</sub>(CH<sub>2</sub>)<sub>2</sub>NH<sub>2</sub>]Cl, ≥97%**  
**Chloro(*p*-cymene)(2-(diisopropylphosphino)ethylamine)ruthenium(II)chloride**  
 C<sub>18</sub>H<sub>34</sub>Cl<sub>2</sub>NPRu; F.W: 467.42