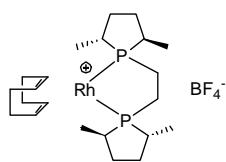
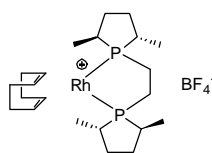


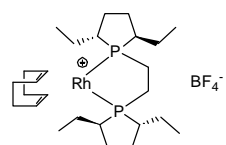
Rhodium BPE Phospholane Catalysts



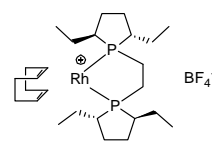
KP45-100007
 [((*R,R*)-Me-BPE)Rh(COD)]BF₄, ≥97.0%
 1,2-Bis((2*R*,5*R*)-2,5-dimethylphospholano)ethane(cyclooctadiene)rhodium(I) tetrafluoroborate
 C₂₂H₄₀BF₄P₂Rh; F.W: 556.21; [305818-67-1]



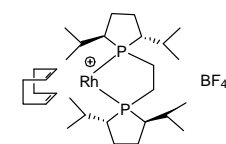
KP45-100008
 [((*S,S*)-Me-BPE)Rh(COD)]BF₄, ≥97.0%
 1,2-Bis((2*S*,5*S*)-2,5-dimethylphospholano)ethane(cyclooctadiene)rhodium(I) tetrafluoroborate
 C₂₂H₄₀BF₄P₂Rh; F.W: 556.21; [213343-65-8]



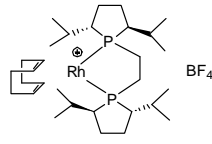
KP45-100015
 [((*R,R*)-Et-BPE)Rh(COD)]BF₄, ≥97.0%
 1,2-Bis((2*R*,5*R*)-2,5-diethylphospholano)ethane(cyclooctadiene)rhodium(I) tetrafluoroborate
 C₂₆H₄₈BF₄P₂Rh; F.W: 612.32



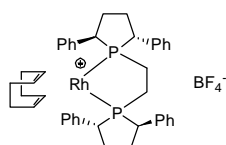
KP45-100016
 [((*S,S*)-Et-BPE)Rh(COD)]BF₄, ≥97.0%
 1,2-Bis((2*S*,5*S*)-2,5-diethylphospholano)ethane(cyclooctadiene)rhodium(I) tetrafluoroborate
 C₂₆H₄₈BF₄P₂Rh; F.W: 612.32



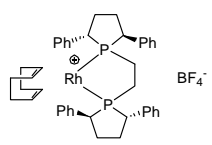
KP45-100020
 [((*R,R*)-iPr-BPE)Rh(COD)]BF₄, ≥97.0%
 1,2-Bis((2*R*,5*R*)-2,5-diisopropylphospholano)ethane(cyclooctadiene)rhodium(I) tetrafluoroborate
 C₃₀H₅₆BF₄P₂Rh; F.W: 668.42



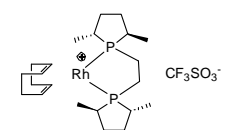
KP45-100019
 [((*S,S*)-iPr-BPE)Rh(COD)]BF₄, ≥97.0%
 1,2-Bis((2*S*,5*S*)-2,5-diisopropylphospholano)ethane(cyclooctadiene)rhodium(I) tetrafluoroborate
 C₃₀H₅₆BF₄P₂Rh; F.W: 668.42



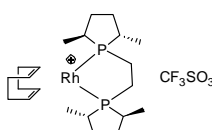
KP45-100027
 [((*R,R*)-Ph-BPE)Rh(COD)]BF₄, ≥97.0%
 1,2-Bis((2*R*,5*R*)-2,5-diphenylphospholano)ethane(cyclooctadiene)rhodium(I) tetrafluoroborate
 C₄₂H₄₈BF₄P₂Rh; F.W: 804.49; [528565-84-6]



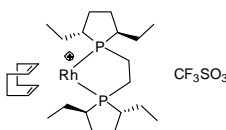
KP45-100028
 [((*S,S*)-Ph-BPE)Rh(COD)]BF₄, ≥97.0%
 1,2-Bis((2*S*,5*S*)-2,5-diphenylphospholano)ethane(cyclooctadiene)rhodium(I) tetrafluoroborate
 C₄₂H₄₈BF₄P₂Rh; F.W: 804.49



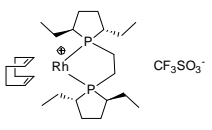
KP45-100003
 [((*R,R*)-Me-BPE)Rh(COD)]OTf, ≥97.0%
 1,2-Bis((2*R*,5*R*)-2,5-dimethylphospholano)ethane(cyclooctadiene)rhodium(I) trifluoromethanesulfonate
 C₂₃H₄₀F₃O₃P₂Rh₅Rh; F.W: 618.48



KP45-100004
 [((*S,S*)-Me-BPE)Rh(COD)]OTf, ≥97.0%
 1,2-Bis((2*S*,5*S*)-2,5-dimethylphospholano)ethane(cyclooctadiene)rhodium(I) trifluoromethanesulfonate
 C₂₃H₄₀F₃O₃P₂Rh₅Rh; F.W: 618.48

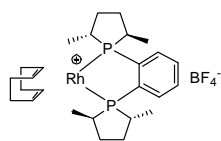


KP45-100011
 [((*R,R*)-Et-BPE)Rh(COD)]OTf, ≥97.0%
 1,2-Bis((2*R*,5*R*)-2,5-diethylphospholano)ethane(cyclooctadiene)rhodium(I) trifluoromethanesulfonate
 C₂₇H₄₈F₃O₃P₂Rh₅Rh; F.W: 674.58

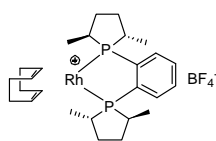


KP45-100012
 [((*S,S*)-Et-BPE)Rh(COD)]OTf, ≥97.0%
 1,2-Bis((2*S*,5*S*)-2,5-diethylphospholano)ethane(cyclooctadiene)rhodium(I) trifluoromethanesulfonate
 C₂₇H₄₈F₃O₃P₂Rh₅Rh; F.W: 674.58

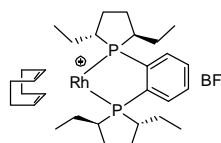
Rhodium DuPhos Phospholane Catalysts



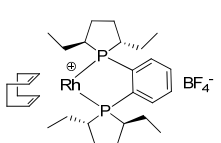
KP45-100005
[[*(R,R)*-Me-DuPhos]Rh(COD)]BF₄, ≥97.0%
1,2-Bis((2*R*,5*R*)-2,5-dimethylphospholano)-
benzene(cyclooctadiene)rhodium(I)
tetrafluoroborate
 C₂₆H₄₀BF₄P₂Rh; F.W: 604.25; [210057-23-0]



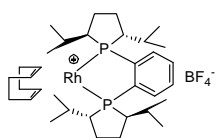
KP45-100006
[[*(S,S)*-Me-DuPhos]Rh(COD)]BF₄, ≥97.0%
1,2-Bis((2*S*,5*S*)-2,5-dimethylphospholano)-
benzene(cyclooctadiene)rhodium(I)
tetrafluoroborate
 C₂₆H₄₀BF₄P₂Rh; F.W: 604.25; [205064-10-4]



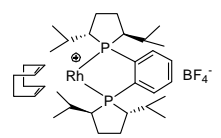
KP45-100013
[[*(R,R)*-Et-DuPhos]Rh(COD)]BF₄, ≥97.0%
1,2-Bis((2*R*,5*R*)-2,5-diethylphospholano)-
benzene(cyclooctadiene)rhodium(I)
tetrafluoroborate
 C₃₀H₄₈BF₄P₂Rh; F.W: 660.36; [228121-39-9]



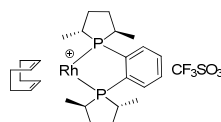
KP45-100014
[[*(S,S)*-Et-DuPhos]Rh(COD)]BF₄, ≥97.0%
1,2-Bis((2*S*,5*S*)-2,5-diethylphospholano)-
benzene(cyclooctadiene)rhodium(I)
tetrafluoroborate
 C₃₀H₄₈BF₄P₂Rh; F.W: 660.36; [213343-64-7]



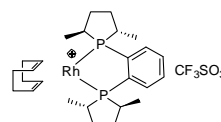
KP45-100018
[[*(R,R)*-iPr-DuPhos]Rh(COD)]BF₄, ≥97.0%
1,2-Bis((2*R*,5*R*)-2,5-diisopropylphosphola-
no)benzene(cyclooctadiene)rhodium(I)
tetrafluoroborate
 C₃₄H₅₆BF₄P₂Rh; F.W: 716.47; [569650-64-2]



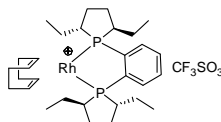
KP45-100017
[[*(S,S)*-iPr-DuPhos]Rh(COD)]BF₄, ≥97.0%
1,2-Bis((2*S*,5*S*)-2,5-diisopropylphosphola-
no)benzene(cyclooctadiene)rhodium(I)
tetrafluoroborate
 C₃₄H₅₆BF₄P₂Rh; F.W: 716.47



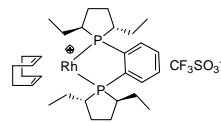
KP45-100001
[[*(R,R)*-Me-DuPhos]Rh(COD)]OTf, ≥97.0%
1,2-Bis((2*R*,5*R*)-2,5-dimethylphospholano)-
benzene(cyclooctadiene)rhodium(I)
trifluoromethanesulfonate
 C₂₇H₄₀F₃O₃P₂RhS; F.W: 666.52; [187682-63-9]



KP45-100002
[[*(S,S)*-Me-DuPhos]Rh(COD)]OTf, ≥97.0%
1,2-Bis((2*S*,5*S*)-2,5-dimethylphospholano)-
benzene(cyclooctadiene)rhodium(I)
trifluoromethanesulfonate
 C₂₇H₄₀F₃O₃P₂RhS; F.W: 666.52; [136705-75-4]



KP45-100009
[[*(R,R)*-Et-DuPhos]Rh(COD)]OTf, ≥97.0%
1,2-Bis((2*R*,5*R*)-2,5-diethylphospholano)-
benzene(cyclooctadiene)rhodium(I)
trifluoromethanesulfonate
 C₃₁H₄₈F₃O₃P₂RhS; F.W: 722.62; [136705-77-6]



KP45-100010
[[*(S,S)*-Et-DuPhos]Rh(COD)]OTf, ≥97.0%
1,2-Bis((2*S*,5*S*)-2,5-diethylphospholano)-
benzene(cyclooctadiene)rhodium(I)
trifluoromethanesulfonate
 C₃₁H₄₈F₃O₃P₂RhS; F.W: 722.62; [142184-30-3]